

Annual Report

20
24

Annual Report



Contents

3	Director's introduction
4	Highlights 2024
9	2024 in numbers
10	CMI Organisation
12	The Board of CMI and CMF
13	Management group CMI
14	Staff
17	Publications
23	Board of Director's report
27	Financial Statements
32	Notes to the accounts
38	Auditor's Report

DIRECTOR'S INTRO

CMI is an independent research institute with over 90 years of history, dedicated to promoting tolerance and mutual understanding between nations and peoples, as envisioned by our founder, Christian Michelsen, Norway's first prime minister after independence. This purpose remains crucial today as we navigate a world marked by severe global disruptions.

In 2024, we witnessed increased geopolitical tensions, humanitarian crises, and ongoing conflicts. Wars in Sudan, Gaza, and Ukraine continued, causing immense human suffering. Climate change also remains a pressing issue, with potentially devastating consequences for livelihoods, food security, health and wellbeing, and peace and security. These challenges underscore the importance of our work at CMI, where we strive to provide research-based knowledge that shapes policy and practice to address these global challenges.

A good example of CMI's importance is our research on tax together with local partners in Tanzania and Zanzibar. This research has helped build trust between taxpayers and tax authorities, leading to new strategic plans and policies. Improving tax collection is of key importance for the government to be able to generate the funds necessary to develop the country, building schools, roads and hospitals. In 2024, a delegation from the Zanzibar Revenue Authority and the Norwegian Tax Administration visited CMI to discuss how research can further inform tax reforms and administrative practices, particularly in developing more constructive relations between the tax administration and the private sector.

CMI also contributed to Palestinian humanitarian efforts. The Secretary General of the UN asked CMI to participate in the Review Group to assess UNRWA's mechanisms and procedures for neutrality, together with the Raoul Wallenberg Institute and the Danish Institute for Human Rights. This assessment resulted in UNRWA starting a process of agency reform based on the Review Group's work. The Review also played a crucial role in getting donors back to support UNRWA and the reinstatement of funding to the Agency.



Our focus on policy-relevant knowledge positions CMI uniquely to influence policies and priorities. This year, Espen Barth Eide, the Minister of Foreign Affairs, visited CMI to discuss how our research can support Norwegian aid and foreign policy, particularly in countries like Afghanistan and Sudan, which are important to Norwegian foreign policy. The minister met with several CMI researchers who have extensive experience working in these regions.

We work together with our partners in these regions, like in the Sudan-Norway Academic Cooperation (SNAC) project, and this give us the best starting point for analysing consequences of war and conflict, and their possible solutions. The war in Sudan is now at the core of what the UN has coined 'the most devastating humanitarian and displacement crisis in the world'. With many of our Sudanese colleagues at risk and currently displaced because of the war, we readjust in ways that enable us to continue the close cooperation. Despite the challenges caused by the war, we continue to produce high quality research and to contribute to debates that place developments in Sudan on the international agenda.

Long-term partnerships like these are essential for fulfilling our mission. The continuity in our research and our close collaboration with local partners ensure that we provide solid contextual knowledge. CMI aims to be a role model for equal and inclusive partnerships in all our endeavors. We look forward to continuing these relationships and advancing the knowledge needed to understand and propose solutions to the challenges ahead.

Espen Villanger
DIRECTOR

Highlights

2024



Every year on March 15, Christian Michelsen's birthday, we host the Chr. Michelsen Annual Lecture, where we invite a distinguished scholar or practitioner to come to challenge and inspire us. Photo: Cecilie Bannow

Annual Lecture 2024: Art as Resistance: Ahmed Umar's stories

The renowned Sudanese-Norwegian artist Ahmed Umar was this year's keynote speaker. He spoke about his artistic journey and shared his personal reflections on how he uses his art to communicate narratives about suppression and alienation, turning them into a powerful tool for change and liberation. The keynote was followed by a conversation on art, the politics of resistance, and authoritarianism with panelists Ruba El Melik, Matthew Gichohi and Katarzyna Grabska, moderated by Liv Tønnessen. The film 'The Art of Sin' directed by Ibrahim Mursal was also screened as part of this year's annual lecture.

Strengthening Knowledge Services, Networks and Collaborations

2024 was a productive year for The Development Learning Lab (DLL). In addition to their new helpdesk which offers tailor-made knowledge services to aid organisations, they established two new learning networks: one on Women's Economic Empowerment and one on Climate Adaptation. In addition, they continued their collaboration with the MERLiN network (Monitoring, Evaluation, Research and Learning in Norway) through several joint workshops.

They also started a new long-term research collaboration with Hauge Microfinance to evaluate the impact of providing business investment grants to their clients in Burundi.

DLL has also increasingly engaged in aid policy work. This year they contributed to discussions on the financing of global public goods, on investment opportunities in global health, and on knowledge-based aid.

Development Learning Lab (DLL) is a research and learning centre working with development practitioners to enhance learning and improve outcomes of development programs. DLL is a collaboration between Chr. Michelsen Institute (CMI), the University of Bergen (UiB), the Norwegian School of Economics (NHH) and Centre for Applied Research (SNF). Read more about DLL at www.devlearnlab.no

Spearheading Anti-Corruption strategies in Global Health and in Ukraine

The U4 Anti-Corruption Resource Centre at CMI continued to advance research, training, dialogue, and advisory services that address corruption-related barriers to development. Through evidence-based insights and practical support, U4 helps partners and others in navigating complex governance challenges.

In 2024, the U4 team collaborated with Transparency International Global Health to assess and refine anti-corruption measures within health programmes of bilateral and multilateral agencies. U4 advisers also started participating in the Lancet Commission on Anti-Corruption in Health, which underscores the importance of anti-corruption advocacy, contributing to global discussions, and promoting essential health system reforms.

U4 played a role in promoting effective anti-corruption strategies as part of Ukraine's recovery and reconstruction process. The centre's research outputs drove stakeholder discussions and informed preparatory meetings for the Ukraine Recovery Conference in Berlin. In addition, U4 showcased its leadership on anti-corruption efforts in fragile and conflict-affected states at major international events, such as the Chatham House research conference.

The U4 Anti-Corruption Resource Centre at CMI works to reduce the harmful impact of corruption on society. The centre covers a wide range of anti-corruption themes, including health and education, the justice sector, climate and natural resources, money politics, Ukraine reconstruction, and more. The team delivers research, courses, advice, workshops and events. Read more at www.u4.no

Continuing our Sudan collaboration

Despite the ongoing war in Sudan, the Sudan-Norway Academic Cooperation (SNAC) continued to provide high quality collaborative research and to be an important platform facilitating Sudanese scholars' participation in academic and policy debates about Sudan through research projects, scholarships, collaborative writing projects, co-supervision of students, guest research stays, academic courses and the organization of workshops. Throughout the year, SNAC organized five workshops in Egypt, Uganda, Qatar and Sudan, and thirteen seminars in Bergen and in Cairo.

The SNAC project published nine articles, book chapter and working papers on current challenges facing Sudan such as food security, displacement and feminist mobilization. In addition, the project team produced two policy briefs and eight blog posts in the Sudanese Perspectives blog which is edited by SNAC and has engaged marginalized Sudanese voices and perspectives, especially among youth and women. The project team also digitalized 162 historical documents from the Sean O' Fahey collection at the University of Bergen to enable more research on Sudan and from Sudanese researchers in Sudan.

Our impact is evidenced by the SNAC team members frequently being invited to high level events to discuss the humanitarian situation and the dire consequences of the war in Sudan.



The Sudan-Norway Academic Cooperation (SNAC) is a project headed by CMI in partnership with the University of Bergen, the University of Khartoum and seven regional universities in Sudan. With a focus on mutual learning and knowledge exchange, SNAC aims to empower marginalized areas (regional universities) and groups (women and youth) to actively participate in national and international academic and policy discourses about their own country. The SNAC programme is funded by the Royal Norwegian Embassy in Khartoum.

[Go to SNAC project](#)



EFFEXT project team at Addis Ababa University.

Managing African migration governance

The EFFEXT project team hosted their final conference in Addis Ababa, Ethiopia in December. The conference was co-hosted with Addis Ababa University. The conference welcomed a number of academics and policymakers travelling from countries such as Norway, Denmark, the UK, Germany, Italy, Senegal, Nigeria, Morocco, and Ghana to discuss issues related to African Migration Governance.

The EFFEXT project targeted the effects of European external migration governance in six countries across Africa and the Middle East. Read about the project:

[Go to EFEXT project](#)

New appointments and awards

- Ottar Mæstad was appointed to a new expert committee tasked to give advice on how Norway can contribute to advance global health in the years ahead. [Read more](#)
- Arne Strand and Torunn Wimpelmann were appointed members of a committee that will evaluate Norway's engagement in Afghanistan from 2015-2021. [Read more](#)
- Hilde Beate Selbervik became the new director of the U4 Anti-Corruption Centre at CMI from June 1. Joining her in the management of the U4 team is Monica Kirya, who became deputy director. [Read more](#)
- Pauline Lemaire was awarded the Chr. Michelsen prize for outstanding development research for her article 'Online censorship and young people's use of social media to get news', published in International Political Science Review in July 2023. [Read more](#)
- Synnøve Bendixsen was appointed new Chair of the Board at the Chr. Michelsen Institute. Bendixsen is Professor and Head of the Department of Social Anthropology at the University of Bergen. [Read more](#)

Investigating Eritrean disinformation tactics

CMI received funding from the Norwegian Research Council for a new project exploring how the Eritrean government's political activities and online tactics affect diaspora communities in Europe, particularly in Norway and Sweden. [Read more](#)

Exploring the role of Trust in Tax Compliance

CMI has a long-standing commitment to research on taxation and compliance in African countries, built on decades of collaboration with local research institutes and tax authorities.

In 2024, CMI co-hosted the CMI Tax Day – a full-day workshop in partnership with the Norwegian Tax Administration (NTA), the Norwegian Institute of International Affairs (NUPI), and Tax Justice Norway (TJN). The event brought together experts to take stock of ongoing research and capacity-building efforts in sub-Saharan Africa.

A key focus this year was our enduring collaboration with the Zanzibar Revenue Authority (ZRA) and the NTA. In August, CMI hosted a workshop with senior ZRA managers, NTA, and NHH representatives to explore how research can inform tax reforms – particularly in fostering

more constructive relationships between tax administrations and the private sector.

Insights from this collaboration have directly influenced ZRA's new Strategic Plan for 2025–2030, and contributed to broader policy development in Zanzibar, where ZRA plays an advisory role to the government on tax matters.

Part of independent review of UNRWA

The UN appointed an independent Review Group to assess UNRWA's work. CMI was part of the Review Group together with the Raoul Wallenberg Institute in Sweden and the Danish Institute for Human Rights: [Read more](#)

Events to make sense of global challenges

- For the ten past years, **the Bergen Exchanges on Law and Social Transformation** has been a meeting place and avenue for discussions on the use of law as a driver of social change. [Read more](#)
- Academics and civil society actors from all over the world come to **Bergen Global** to share their knowledge and analysis on global development challenges. The events range from breakfast seminars on current affairs, to research presentations. The events all fall under the umbrella of "making sense of global challenges", with a focus on cross-disciplinary discussions.

Bergen Global is a multidisciplinary UiB-CMI collaboration. The editorial team at Bergen Global organise breakfast meetings, open lectures, literary salons, and other events. The Bergen Global library houses a large specialised collection of literature with a thematic focus on Africa, Asia, the Middle East and Latin America. [Go to bergenglobal.no](https://bergenglobal.no)

- CMI participated at **Arendalsuka 2024**, shedding light on topics at the core of our research: global public goods, governance, and international relations with Afghanistan. [Read more](#)
- **Espen Barth Eide, the Minister of Foreign affairs** visited CMI to pinpoint knowledge needs and to discuss what role CMI can play as a sparring partner. With a focus on policy relevant knowledge, CMI is in a unique position to provide knowledge that can feed directly into Norwegian foreign policies and priorities. [Read more](#)

13 new employees

We welcomed thirteen new colleagues from all over the world to join our international work environment:



Fereshta Abbasi
Associated Senior Research Adviser



Ingvild Almås
Associated Research Professor



Ankush Asri
Post Doc. Researcher



Tobias Benedikt Baehr
Post Doc. Researcher



Alessandro Corso
Post Doc. Researcher/Marie Skłodowska-Curie Fellowship



Gabriele de Seta
Associated Researcher



Simen Hagen Ekeberg
U4 Programme Officer



Robert Aleksander Forster
U4 Programme Adviser



Joshua David Franklin-Mann
Communications Adviser



Nicholas Colin Harvey Sky
Post Doc. Researcher



Carlo Koos
Associated Senior Researcher

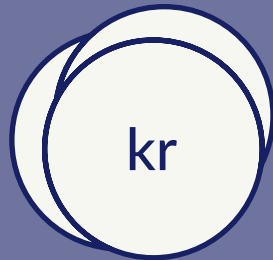


Trond Kvamme
Senior Research Data Management Adviser



Jan Erik Saggau
IT Apprentice

2024 *in numbers*



131

mill. NOK
total revenue



-3,00

mill. NOK
annual result



138

publications
by CMI staff



44

U4 webinars, workshops
and courses



80

events hosted by Bergen
Global



92

externally funded
projects



13

new employees



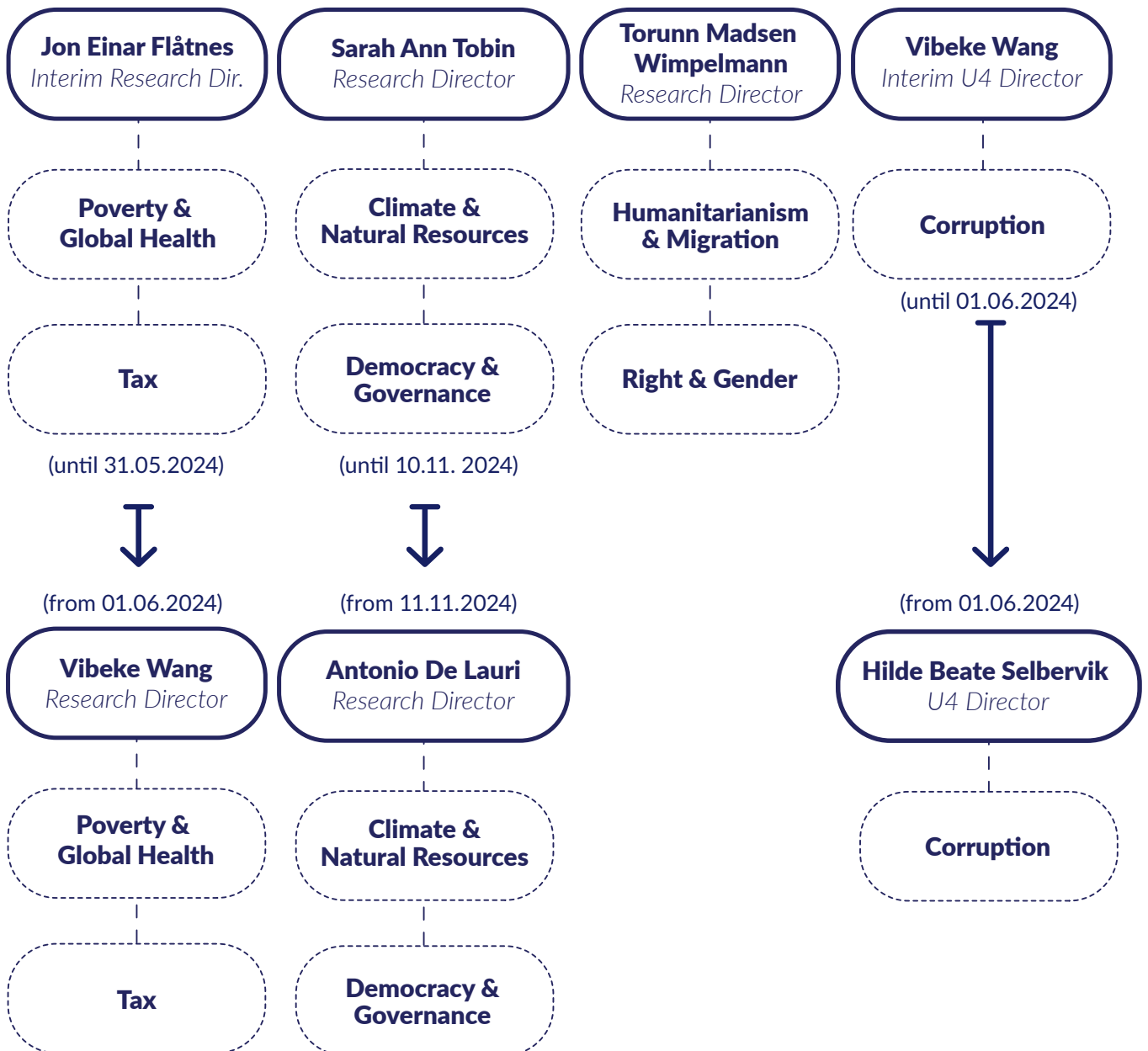
105

total employees

CMI's organisation



Research groups and the U4 Centre



CMI & CMF Board



Professor
Guri Rørtveit
UiB
(until 12.03.2024)



Professor
Synnøve Bendixsen
UiB
(from 12.03.2024)



Secretary-General
Catharina Bu
United Nations
Association of Norway
(UNA Norway)



Professor
Alexander W. Cappelen
NHH



Post Doctoral Researcher
Matthew Gichohi
CMI



Andrew Norton
Senior Adviser to the
Executive Director,
Green Climate Fund;
Professor of Practice,
School of Oriental
and African Studies,
University of London



Senior Programme Adviser
Sofie Schütte
CMI/U4
(until 31.05.2024)



Head of IT
Aksel Mjeldheim
(deputy) CMI
(until 31.05.2024)



Senior Researcher
Arne Strand
(deputy) CMI
(from 01.06.2024)



Senior Researcher
Liv Tønnessen
CMI
(from 01.06.2024)

Management



Director
Espen Villanger



*Deputy Director
(From 01.06.2024. Interim
deputy director until
31.05.2024)*
Monica Kirya
U4 Anti-Corruption
Resource Centre



*Director
(from 01.06 2024)*
Hilde Beate Selbervik
U4 Anti-Corruption
Resource Centre



*Administration &
Finance Director*
Lars Petter Sjøberg



*Research Director
(from 11.11.2024)*
Antonio De Lauri



Communications Director
Mia Kolbjørnsen



*Research Director
(Interim U4 Director
until 01.06.2024)*
Vibeke Wang



*Director of HR &
Organizational
Development*
Hanna Fløysvik



*Interim Research Director
(until 31.05.2024)*
Jon Einar Flåtnes



Research Director
**Torunn Madsen
Wimpelmann**



*Research Director
(until 10.11.2024)*
Sarah Ann Tobin

Staff list

AS OF 31 DEC 2024

Director

Espen Villanger

Management

Antonio De Lauri
Research Director for Climate & Natural Resources and Democracy & Governance
(From 11.11.2024)

Hanna Fløysvik
Director of HR and Organizational Development

Jon Einar Flåtnes
Interim Research Director for Poverty & Global Health and Tax
Until 31.05.2024

Monica Kirya
Interim U4 Deputy Director
(Until 31.05.2024)

U4 Deputy Director
(From 01.06.2024, new leadership position)

Mia Kolbjørnsen
Communications Director

Lars Petter Sjøberg
Administration and Finance Director

Hilde Beate Selbervik
U4 Director
(From 01.06.2024)

Sarah Ann Tobin
Research Director for Climate & Natural Resources and Democracy & Governance (until the 10.11.2024)

Vibeke Wang
Research Director for Poverty & Global Health and Tax (from 01.06.2024)

Interim U4 Director 01.10.2023-31.05.2024

Torunn Madsen Wimpelmann
Research Director for Humanitarianism & Migration and Rights & Gender

Administration

Trine Berntsen
Senior Facilities & Operations Officer

Steinar Hegre
Project Director
(Until 30.04.2024)

Reginald Chistopher Jacob
Office Support Coordinator (60%)

Trond Kvamme
Senior Research Data Management Adviser (From 02.04.2024)

Tineke Lohne
Senior Project Controller (50%) and *Quality & Finance Adviser* (50%)

Project Unit

Simen Hagen Ekeberg
Graduate Project Controller
(Until 31.05.2024)

Olga Radionenko
Senior Project Controller

Giedre Seduikiene
Project Controller

Katharina Maria Sewening
Senior Project Controller
(Until 31.05.2024)

Head of Projects
(From 01.06.2024, new leadership position)

IT

Aksel Mjeldheim
Head of IT

Lars Ivar Høberg
Higher executive IT officer (40%)

Bjørn-Ivar Krüger Nilsen
IT officer (40%)

Jan Erik Saggau
IT Apprentice
(From 12.08.2024)

Robert Sjørnsen
Senior IT Adviser

Accounting & Payroll

Petter Lohne
Head of Accounting & Payroll

Kari Helvik Aarlie
Payroll & Accounting Adviser

Paola Andrea Berge
Travel and Payroll Adviser
(Until 31.08.2024)

Senior Travel and Payroll Adviser
(From 01.09.2024)

Lars Erik Knardahl
Administration & Finance Officer (50%) (Until 31.10.2024)

Elisabeth Sivertsen
Administration and Finance Officer (50%) (back from leave 01.09.2024)

HR & Organizational Development

Maren Søreide
HR Officer (30%)

Communication

Lisa Maree Arnestad
Digital Communications Adviser, U4

Kirsty A. Cunningham
Senior Communication Adviser, U4

Åse Johanne Roti Dahl
Senior Communication Adviser

Joshua David Franklin-Mann
Communications Adviser
(From 01.03.2024)

Pernille Jørgensen
Graphic Designer & Branding Adviser

Stephen Eugene Mathis
Senior Communication Adviser (20%) (on leave from 01.08.2024)

Bergen Global

Mia Kolbjørnsen
*Operations Manager and
Communication Director*

Susanne Hoggen Kippersund
*Communication Adviser,
University of Bergen (UiB)
(Until 28.08.2024)*

Reidunn Ljones
Principal Librarian

Tord Rø
*Communication Adviser,
University of Bergen (UiB)*

Climate & Natural Resources

Tobias Benedikt Baehr
*Post Doc. Researcher
(From 15.09.2024)*

Anwasha Dutta
Senior Researcher

Jon Einar Flåtnes
Senior Researcher

Yograj Gautam
*Post Doc. Researcher
(Until 31.10.2024)*

Hanna Geschewski
Doctoral Researcher

Nicholas Colin Harvey Sky
*Post Doc. Researcher
(From 01.02.2024)*

Ivar Kolstad
Associated Research Professor

Erik W. Kolstad
Associated Research Professor

Carlo Koos
*Associated Senior Researcher
(From 01.01.2024)*

Edyta Roszko
Research Professor

Xuefei Shi
Post Doc. Researcher

Hang Zhou
*Post Doc. Researcher
(Until 31.08.2024)*

Democracy & Governance

Lovise Aalen
Research Professor

Inge Amundsen
*Senior Researcher
(Until 31.07.2024)*

Kjersti Gravelseter Berg
*Associated Senior Researcher
(From 01.02.2024 – 30.06.2024)*

Gabriele de Seta
*Associated Researcher
(From 01.01.2024)*

Antonio De Lauri
*Research Professor
(until 10.08.2024)
Research Director
(from 11.08.2024)*

Matthew Gichohi
Post Doc. Researcher

Siril Kobbeltvedt Herseth
Doctoral Researcher

Liazzat Jenisovna Kashknova
Bonate
Associated Research Professor

Pauline Marguerite Lemaire
*Researcher
(Until 31.01.2024)
Post Doc. Researcher
(From 01.02.2024)*

Aslak Jangård Orre
Senior Researcher

Lise Rakner
Associated Research Professor

Egna Rachel Isaias Sidumo
Doctoral Researcher

Elling N. Tjønneland
Senior Researcher

Sarah Ann Tobin
*Research Director
(Until 10.08.2024)
Research Professor
(From 11.08.2024)*

Rights & Gender

Fereshta Abbasi
*Associated Senior Research Adviser
(From 01.07.2024)*

Leonardo Rafael Arriola
Associated Research Professor

Munzoul Abdalla Munzoul Assal
Senior Researcher (80%)

Anne Kathrine Bang
Associated Research Professor

Lara Barbosa Quadros Cortes
Associated Researcher

Ana de Mello Côrtes
*Researcher (15%)
(Until 14.03.2024)*

Mari Norbakk
Post Doc. Researcher

Carmeliza Soares da Costa Rosário
Post Doc. Researcher

Rachel Henriette Sieder
Associated Senior Researcher

Elin Skaar
Research Professor

Selma Øilo Tenold
*Research Assistant
(From 15.10.2024)*

Liv Tønnessen
Senior Researcher

Marianne Tøraasen
Post Doc. Researcher

Torunn Madsen Wimpelmann
Research Director

Poverty & Global Health

Ingvild Almås
*Associated Research Professor
(From 01.05.2024)*

Viola Asri
Senior Researcher

Ankush Asri
*Post Doc. Researcher (94%)
(From 01.04.2024)*

Bet Helena Caeyers
Senior Researcher

Peter Hangoma
Senior Researcher

Magnus Hatlebakk
Senior Researcher

Karine Aasgaard Jansen
Senior Researcher

Ottar Mæstad
*Research Professor (50%)
and Special Adviser (50%)*

Charlotte Ringdal
Senior Researcher

Hilde Beate Selbervik
*Associated Senior Researcher
(Until 31.05.2024)*

Eskindir Loha Shumbullo
*Post Doc. Researcher
(Until 29.05.2024)*

Sigrid Rusten Torsvik
*Research Assistant
(Until 30.04.2024)*

Vibeke Wang
Interim U4 Director
(until 31.05.2024)

Research Director
(from 01.06.2024)

Arne Wiig
Research Professor

James Wintrup
Senior Researcher

Humanitarianism & Migration

Donata Balzarotti
Research Assistant (20%)

Christina Beier
Research Project Assistant (50%)

Alessandro Corso
Post Doc. Researcher

Marie Skłodowska-Curie
Fellowship
(From 01.05.2024)

Antonio De Lauri
Research Professor
(until 10.11.2024)
Research Director
(from 11.11.2024)

Robert Aleksander Forster
Doctoral Researcher
(Until 30.06.2024)

Emily Hume
Adviser
(Until 07.03.2024)

Iva Jelusic
Post Doc. Researcher
(Until 31.07.2024)

Eva Diana Chantal Johais
Post Doc. Researcher

Are John Knudsen
Research Professor

Heidi Mogstad
Post Doc. Researcher

Jessica Leigh Schultz
Senior Researcher

Arne Strand
Senior Researcher

Cathrine Talleraas
Senior Researcher

Kari Grøtterud Telle
Senior Researcher

Tax & Public Finances

Nadja Dwenger
Associated Research Professor

Odd-Helge Fjeldstad
Research Professor

Myriam Lazrek
Research Assistant
(From 12.08.2024)

Samwel Jonathan Nassary
Research Assistant
(Until 29.08.2024)

Ingrid Hoem Sjurten
Senior Researcher

Vincent Somville
Associated Research Professor

U4 Anti-Corruption Resources Centre

Lisa Maree Arnestad
Digital Communications Adviser

Kirsty A. Cunningham
Senior Communications Adviser

Daniela Cepeda Cuadrado
Senior Programme Adviser

Khrystyna Dushka
Research Assistant
(From 12.04.2024 – 01.06.2024,
16.09.2024 – 25.10.2024)

Simen Hagen Ekeberg
U4 Programme Officer
(From 01.06.2024)

Robert Aleksander Forster
Programme Adviser
(From 01.07.2024)

Martha Pricilla González Venegas
U4 Senior Programme Coordinator

Daniel Sejerøe Hausenkamph
Programme Adviser

David Alexander Jackson
Senior Programme Adviser

Monica Twesiime Kirya
Principal Programme Adviser
Interim U4 Deputy Director
(Until 31.05.2024)
U4 Deputy Director
(From 01.06.2024,
new leadership role)

Clarisse Le Thanh
Online course and digital officer
(20%) (From 22.05.2024)

Rosa Esther Loureiro Revilla
Senior Programme Adviser

Saul C. B. Mullard
Senior Programme Adviser

Guillaume Nicaise
Senior Programme Adviser

Sofie Arjon Schütte
Principal Programme Adviser

Hilde Beate Selbervik
U4 Director
(From 01.06.2024)

Janne Sperrevik
Online Course and Digital Officer
(50%)

Rachael Lorna Tufft
Senior Learning Technology Adviser

Vibeke Wang
Interim U4 Director (until
31.05.2024)

David Aled Williams
Principal Programme Adviser

Emeritus/Emerita

Jan Isaksen

Gunnar M Sørbø

Arne Tostensen

Inge Tvedten

Inge Amundsen

Publications 2024

Books and Anthologies

Knudsen, Are John and Sarah Tobin (Eds.) (2024) *Urban Displacement: Syria's Refugees in the Middle East*. Berghahn (Forced Migration)

Mogstad, Heidi (2024) *Humanitarian Shame and Redemption: Norwegian Citizens Helping Refugees in Greece*. Berghahn Books (Humanitarianism and Security vol. 4)

Roszko, Edyta and Tim Winter (2024) *Oceanic geographies and maritime heritage in the making: Producing history, memory and territory*. International Journal of Heritage Studies, vol.30, no.6. International Journal of Heritage Studies vol. 30 no. 6

Peer Reviewed Journal Articles

Achilli, Luigi (2024) "Caught in the Crossfire: Unravelling the complex interplay of exploitation and agency in children associated with Boko Haram" in *Anti-Trafficking Review* vol. 22 no. April pp. 12-33

Achilli, Luigi (2024) "The missing link: The role of criminal groups in migration governance" in *Journal of ethnic and migration studies* 50, no. 20: 5045-5066.

Billaud, Julie, Antonio De Lauri (2024) "Gaza, South Africa and the Return of the Third World: Toward a Postcolonial Humanism" in *Humanity: An International Journal of Human Rights, Humanitarianism, and Development*

Boucher, Stephen R, Michael R Carter, Jon Einar Flatnes, Travis J Lybbert, Jonathan G Malacarne, Paswel P Mareyna, Laura A Paul (2024) "Bundling Genetic and Financial Technologies for More Resilient and Productive Small-Scale Farmers in Africa" in *The Economic Journal* vol. 134 no. 662 2321-2350 p.

Burlando, Alfredo, Pradeep Chintagunta, Jessica Goldberg, Melissa Graboyes, Peter Hangoma, Dean Karlan, Mario Macis, and Silvia Prina (2024) "Passing the message: Peer outreach about COVID-19 precautions in Zambia" in *Journal of Development Economics* 171: 103318.

Chilala, Sandra Beauty, Adam Silumbwe, Joseph Mumba Zulu, Moses Tetui, Maio Bulawayo, Mwimba Chewe, and Peter Hangoma (2024) "Individual, community and health systems factors influencing time to notification of tuberculosis: situating software and hardware bottlenecks in local health systems" in *BMC Health Services Research* 24, no. 1: 1-11.

Corso, Alessandro (2024) "For an Anthropology of Liberation How does one watch and how does one write across existential borderlands?" in *Yearbook in Cosmopolitan Studies* vol. 7 no. 1

Corso, Alessandro and Mookherjee, Nayanika (2024) "The presence of abandonment: Left to live at the borderland of Lampedusa" in *American Anthropologist* pp. 1-13

De Lauri, Antonio, and Carna Brkovic (2024) "The Humanitarian Theater in the Mediterranean and the Threat of Violence in the Balkans" in *Journal of Borderlands Studies* 39, no. 4: 737-756.

de Mello Côrtes, Ana, and Lívia Gonçalves Buzolin (2024) "Paths towards LGBT rights recognition in Brazil" in *Sexuality Research and Social Policy* 21, no. 3: 1206-1219.

de Waegh, Roxane, Nathaniel Wilson, and Lucas Watt (2024) "Marine Spatial Planning and the loss of traditional power in Fiji and the Cook Islands" in *Singapore Journal of Tropical Geography* 45, no. 3: 563-580.

Dutta, Anwasha, Leonie Bossert, Tom Crompton, Joni Seager (2024) "Mapping the patriarchy in conservation" in *NPJ Biodiversity* vol. 3 no. 1 pp. 1-5

Endriyas, Misganu, Mekidim Kassa, Yilma Chisha, Emebet Mekonnen, Tebeje Misganaw, Eskindir Loha and Ayalew Astatkie (2024) "Low long-lasting insecticidal net use in malaria elimination areas in Southern Ethiopia: results from community based cross-sectional study" in *Malaria Journal* vol. 23 no. 1

Erdal, Marta Bivand, Marianne Larsen, Cathrine Talleraas, Andreas Forø Tollefsen (2024) "Education desires and conflict impacts in refugees' decisions to leave" in *Migration Studies* vol. 12 no. 4 pp. 1-18

Hangoma, P., K. Hachhethu, O.F. Norheim, S. Passeri, J. Rivers, O. Mæstad (2024) "Short- and long-term food security and policy responses in pandemics: Panel data evidence from Covid-19 in low- and middle-income countries" in *World Development* vol. 175

Hiwatari, Masato, Daichi Yamada, Daiju Narita, Peter Hangoma, and Bona Chitah (2024) "Toxic pollution and poverty: economic impacts of lead (Pb) exposure on household welfare in Zambia" in *Ecological Economics* 221: 108209.

- Ishola, Foluso, Carmeliza Rosario, Sally Griffin, Celso Khosa, Arijit Nandi (2024) "Abortion Legal Reform and Neonatal Mortality in Mozambique" in *Maternal and Child Health Journal* vol. 28 no. 3 pp. 1-9
- Johais, Eva (2024) "Preserving interventionism: how professionalisation secures the survival of electoral assistance" in *Canadian Journal of Development Studies/Revue canadienne d'études du développement* 45, no. 4: 695-714.
- Kotsadam, Andreas, and Vincent Somville (2024) "Wealth and charitable giving—Evidence from an Ethiopian lottery" in *Journal of Development Economics* 167: 103250.
- Knudsen, Are John (2024) "Crushing Hamas? Origins and Expansion of the Islamic Resistance Movement in Lebanon" in *Anthropology of the Middle East (AME)* vol. 19 no. 2
- Lemaire, Michaël Tatham: Pauline (2024) "Mapping domestic climate authority: insights from the UK's multi-scale institutional architecture" in *British Politics*
- Lysa, Charlotte and Mari Norbakk (2024) "Tomme løfter om bot og bedring? Qatars arbeidsmigranter og fotball VM 2022" in *Babylon - Nordisk tidsskrift for Midtøstenstudier* vol. 23 no. 1
- Malan, Mandy, Rachel Carmenta, Elisabeth Gsottbauer, Paul Hofman, Andreas Kontoleon, Tom Swinfield, and Maarten Voors. (2024) "Evaluating the impacts of a large-scale voluntary REDD+ project in Sierra Leone" in *Nature Sustainability* 7, no. 2: 120-129.
- Mogstad, Heidi (2024) "The Self-Realising Soldier: Post-Heroic Reflections from Norwegian Afghanistan Veterans" in *Public Anthropologist* vol. 6 no. 1 pp. 119-124
- Mogstad, Heidi & Thea Rabe (2024) "On the Right Side of History: How Memories of World War Two Nourish Subversive Humanitarianism" in *Nordic Journal of Migration Research* vol. 14 no. 3, pp. 1-19
- Mori, Amani Thomas, Mweetwa Mudenda, Bjarne Robberstad, Kjell Arne Johansson, Linda Kampata, Patrick Musonda, and Ingvild Sandoy (2024) "Impact of cash transfer programs on healthcare utilization and catastrophic health expenditures in rural Zambia: a cluster randomized controlled trial" in *Frontiers in Health Services* 4 1254195.
- Sandøy, I F, M Mua, Nelly Claire, Adam Silumbwe, Joseph Mumba Zulu, Chris Mweemba, and Peter Hangoma (2024) "Collaborative governance of an integrated system for collecting contributions for social health insurance, pension, and taxes from the informal sector: a synthesis of stakeholder perspectives" in *BMC Health Services Research* 24, no. 1: 1253.
- Mweemba, Chris, Willbroad Mutale, Felix Masiye, and Peter Hangoma (2024) "Why is there a gap in self-rated health among people with hypertension in Zambia? A decomposition of determinants and rural-urban differences" in *BMC Public Health* 24, no. 1: 1025.
- Nowak, Katarzyna and Bear, Dinah and Dutta, Anwesha and Traphagen, Myles and Zmihorski, Michal and Jaroszewicz, Bogdan (2024) "Threats to conservation from national security interests" in *Conservation Biology* vol. 38 no. 1
- Pandey, Saumya (2024) "'Too Much' Sand, Not Water: A Geostory of Himalayan Riverine Sediments as 'Problem'" in *Cultural Anthropology* vol. 39 no. 4 564-591 p.
- Rosario, Carmeliza (2024) "The Morality of Schooling: Women's Education as an Arena for Social Tension in Cabo Delgado" in *Kronos* vol. 50 no. 1 pp. 1-21
- Roszko, Edyta (2024) "Heritagising the South China Sea: appropriation and dispossession of maritime heritage through museums and exhibitions in Southern China" in *International Journal of Heritage Studies*
- Roszko, Edyta and Tim Winter (2024) "Introduction: theorising heritage for the seas" in *International Journal of Heritage Studies* vol. 30 no. 6 pp. 615-622
- Rudling, Adriana, Mohamed Sesay, Eric Wiebelhaus-Brahm, and Angelika Rettberg (2024) "North-South research collaboration during complex global emergencies: Qualitative knowledge production and sharing during COVID-19" in *Qualitative Research* 24, no. 6: 1419-1437.
- Sandøy, I F, M Mudenda, H K Hegdahl, J Zulu, T Grønvik, E Munsaka, C Jacobs, J Svanemyr, B Tungodden, A Blystad, L M Kampata, M Makasa, K M Moland, O Mæstad, A T Mori, K Fylkesnes, P Musonda (2024) "Effectiveness of economic support, comprehensive sexuality education and community dialogue on early childbearing and sitting for grade nine exams among adolescent girls in rural Zambia: a cluster randomised trial" in *EClinicalMedicine* vol. 78 pp. 1-11
- Schultz, Jessica (2024) "Unsettling expectations of stay: probationary immigration policies in Canada and Norway" in *Comparative Migration Studies* vol. 12 no. 1
- Selby, Jan and Daoust, Gabrielle, Dutta, Anwesha, Gamu, Jonathan Kishen, Marijnen, Esther and Siddiqi, Ayesha and Zeitoun, Mark (2024) "The Many Faces of Environmental Security" in *Annual Review of Environment and Resources* vol. 49 no. 1
- Shi, Xuefei (2024) "Maritime China, sea temples, and contested heritage in the Indian Ocean" in *International Journal of Heritage Studies* vol. 30 no. 6 pp. 653-672

Sidumo, Egna, Bertelsen, Bjørn Enge (2024) "Between Resilience and Radicalisation: Reassessing the Trajectory of Internally Displaced Populations in Cabo Delgado, Mozambique" in *Kronos* vol. 50 no. 1 1-21 p.

Skaar, Elin, Adriana Rudling, Lisa-marie Selvik, Eric Wiebelhaus-Brahm, Jemima García-Godos (2024) "The implementation of truth commission recommendations: Exploring the 'Beyond Words' database for Latin America" in *Conflict Management and Peace Science* pp. 1-22

Skaar, Elin, Aaron John Spitzer (2024) "Conceptualizing the Legitimacy of Non-Transitional Truth Commissions: Norway and Canada Compared" in *Nordic Journal of Human Rights* vol. 42 no. 3 pp. 1-26

Sovacool, Benjamin K. and Mullard, Saul and Ceballos, Juan Camilo (2024) "'Made for corruption?'" Private sector actors, renewable energy, and corruption risks for wind power in Mexico and solar electricity in Kenya" in *The Electricity Journal* vol. 37 no. 7-10 107448 p.

Söderström, Johanna, and Lise Rakner (2024) "Imagined solidarity around tax practices: a two-dimensional framework based on motivating logic and group boundaries" in *The Journal of Modern African Studies* 62.2: 153-173.

Talleraas, Cathrine and Erdal, Marta Bivand and Larssen, Marianne F. and Tollefsen, Andreas F. (2024) "Refugee journey infrastructures: Exploring migration trajectories from South Sudan to Uganda" in *Population, Space and Place*

Tobin, Sarah A., Salam Kanhoush (2024) "Unexpectedly Sudanese Syrians: Issuing passports and the challenges of integration" in *Migration Studies* vol. 12 no. 3 pp. 1-15

Tobin, Sarah A. (2024) "Moving Money: Syrian Refugees Surviving Displacement in Jordan" in *Journal of South Asian and Middle Eastern Studies* vol. 47 no. 3 36-56 p.

Tønnessen, Liv and Samia al-Nagar (2024) "Politicization of international aid: Religious responses to criminalizing female genital mutilation in Sudan" in *Women's Studies International Forum*

Tønnessen, Liv and Samia al-Nagar (2024) "Women, Revolution and Backlash: Igniting Feminist Mobilization in Sudan" in *Politics & Gender*

Twea, Pakwanja, David Watkins, Ole Frithjof Norheim, Boston Munthali, Sven Young, Levison Chiwaula, Gerald Manthalu, Dominic Nkhoma, and Peter Hangoma (2024) "The economic costs of orthopaedic services: a health system cost analysis of tertiary hospitals in a low-income country" in *Health economics review* 14, no. 1: 13.

Watt, Lucas (2024) "Relational resource geographies of beche-de-mer under moratorium" in *Asia Pacific Viewpoint* vol. 65 no. 1

Wintrup, James (2024) "Relational harm: on the divisive effects of global health volunteering at a hospital in rural Zambia" in *Medical Anthropology* vol. 43 no. 3 pp. 189-204
Zhou, Hang and Xie, Jieyi (2024) "Revisiting heritage in the ocean: common heritage of [Hu]mankind, maritime heritage and beyond?" in *International Journal of Heritage Studies* vol. 30 no. 6 pp. 687-702

Aalen, Lovise and Kotsadam, Andreas and Pieters, Janneke and Villanger, Espen (2024) "Jobs and Political Participation: Evidence from a Field Experiment in Ethiopia" in *The Journal of Politics* vol. 86 no. 2

Book Chapters

Einarsen, Terje, Jessica Schultz (2024) "Global developments in refugee law" in Terje Einarsen, Andreas Zimmermann: *The 1951 Convention Relating to the Status of Refugees and its 1967 Protocol 2e*. Oxford University Press

Fjeldstad, Odd-Helge and Ingrid Hoem Sjursen (2024) "The role of trust and norms in tax compliance in Africa" in *Human Development Report 2023-2024 "Breaking the gridlock: Reimagining cooperation in a polarized world"* New York: UNDP pp. 135-141

Fjeldstad, Odd-Helge and Lise Rakner (2024) "Lobbying in tax policy making: The case of VAT-reform in Tanzania" in Anne Mette Kjær, Ane Bak and Marianne Ulriksen: *The politics of revenue bargaining: Triggers, processes, and outcomes*. Oxford: Oxford University Press

Forster, Robert, Are J. Knudsen (2024) "Syrian Self-settlement in Lebanon's 'Arrival Cities': Refugee Livelihoods in Tripoli, Beirut, and Tyre" in Are J. Knudsen, Sarah A. Tobin: *Urban Displacement: Syria's Refugees in the Middle East*. New York, Oxford: Berghahn pp. 29-54

Jansen, Karine Aasgaard (2024) "Uncertainty at the needle point: Vaccine hesitancy, trust, and public health communication in Norway during swine flu and COVID-19" in Lars Borin, Mia-Marie Hammarlin, Dimitrios Kokkonakis, Fredrik Miegel: *Vaccine hesitancy in the Nordic countries. Trust and distrust during the COVID-19 pandemic*. Editors: Lars Borin, Mia-Marie Hammarlin, Dimitrios Kokkonakis, Fredrik Miegel. . Routledge pp. 125-140

Johais, Eva; Mareike Meis (2024) "Corona überleben: Die Figur der: s Überlebende: n als Trägerin von Hoffnung und Angst in den Politiken einer Krise im Werden [Surviving Corona: The figure of the survivor as bearer of hope and fear in the politics of an emerging crisis]" in Dennis Gräf; Martin Hennig: *Corona und mediale Öffentlichkeiten*. Wiesbaden: Springer VS pp. 69-90

Knudsen, Are John (2024) "Gaza Buildings: Architectures of Precarity in Sabra, Beirut" in Bülent Batuman and Kivanç Kılınc (Eds.): *The Urban Refugee: Space, Agency, and the New Urban Condition*. Bristol: intellect

Knudsen, Are John, Sarah Ann Tobin (2024) "Introduction" in Are John Knudsen, Sarah Ann Tobin: *Urban Displacement: Syria's Refugees in the Middle East*. Berghahn Books pp. 1-26

Shi, Xuefei (2024) "Sea-Locked: The Cascading Effects of Seaborne Challenges to Human Security in Madagascar" in Lisa Otto, Anja Menzel eds.: *Global Challenges in Maritime Security: Sustainability and the Sea*. Palgrave Macmillan

Sidumo, Egna Rachel Isaias (2024) "Introduction: The evolving conflict in Mozambique and the rise of Ansar al-Sunna" in *Mozambique's Cabo Delgado Conflict: International Humanitarian Law and Regional Security*. Routledge

Skaar, Elin (2024) "The Nordic Truth and Reconciliation Commissions: A new TRC model for resolving historic and ongoing violations of indigenous rights" in Ray Aldred, John Klaasen, and Line M. Skum: *Cultivating Transformative Reconciliation (ReconTrans Volume II)*. PICKWICK Publications

Skaar, Elin (2024) "Courts and Transitional Justice" in Lee Epstein, Gunnar Grendstad, Urska Sadl, and Keren Weinshall: *Oxford Handbook of Comparative Judicial Behaviour*. Oxford University Press

Suhrke, Astri (2024) "Strategic Caution and Tactical Innovation: UNHCR Responses to Changing Patterns of Displacement" in Are John Knudsen, Sarah Ann Tobin: *Urban Displacement: Syria's Refugees in the Middle East*. Berghahn Books p. 252.

Tobin, Sarah Ann (2024) "At the Intersection of Economic and Family Networks: Female Syrian Refugees from Homs in Mafraq, Jordan" in Are John Knudsen, Sarah Ann Tobin: *Urban Displacement: Syria's Refugees in the Middle East*. Berghahn Books pp. 55-76

Williams, David Aled (2024) "Transnational Environmental Crime and Corruption" in *Cheltenham and Northampton (MA)*: Edward Elgar Publishing

Non-Refereed Journal Articles

De Lauri, Antonio (2024) "Humanitarian contradictions" in *American Ethnologist*

Johais, Eva, Julia Leser, Katarina Kusic, Kristin Anabel Eggeling, André Weißenfels, Andreas Streinzer, Ryan Davey, Johanna Kocks, Felix Anderl, Lena Merkle, Anna Leander (2024) "Forum: Critical ethnography" in *Public Anthropologist* vol. 6 no. 1 pp. 125-199

Talleraas, Cathrine (2024) "Implementing migration policies in Ghana: navigating externalization and local realities" in *Externalizing Asylum - A compendium of scientific knowledge*

External Reports

Almas, I., Caeyers, B., Elisaria, E. and Williams, E. (2024) Kizazi Kijacho: *Empowering Tanzania's next generation for economic growth and inclusion*. (Thrive Policy Brief)

Borhgrevink, Kaja & Arne Strand (2024) *Muslim Alms and Humanitarian Financing: An Analysis of the UNHCR's Refugee Zakat Fund*.

Dwenger, Nadja, Ingrid Hoem Sjursen and Jasmin Vietz (2024) *What Is Fair? Experimental Evidence on Fair Equality vs Fair Inequality*. Munich: CESifo (CESifo Working Paper no. 11289)

Kirya, Monica, Carmeliza Rosario (2024) *Gender and asset recovery: Developing a gender-sensitive framework for asset recovery technical assistance programmes. A case study of Mozambique*. Basel: Embassy of Switzerland in Mozambique, International Centre for Asset Recovery

Lloyd, Rob, Elling Tjønneland, Catrin Hepworth, Jeri Stein, Marianne Tøraasen (2024) *Evaluation of Norad's use of knowledge in portfolio management*. Oslo: Norad Department for Evaluation (Evaluation Report no. 4/2024) 96 + 29 p.

Mæstad, Ottar (2024) *What are the African people asking from their governments?.* Norad

Mæstad, Ottar, Ole Morten Stavland, Arild Angelsen, Laura Derksen, Øyvind Eggen, Haakon Gjerløw, Eivind Moe Hammersmark, Eirik Mofoss, Waranoot Strand (2024) *Next steps for knowledge based aid: Fostering collaborations between NGOs and research institutions*.

Sagmo, Tove, Aled Williams (2024) *Evaluation of Norwegian International Climate and Forest Initiative Support to Civil Society*. *Evaluation Report*.

Stoltenberg, Camilla, Bent Høie, John-Arne Røttingen, Anne-Marie Helland, Amanda Hylland Spjeldnæs, Ole Frithjof Norheim, Karoline M. Linde, Lumbwe Chola, Trygve Ottersen, Ottar Mæstad (2024) *Norge kan, Norge bør: Ta lederskap for å halvere tidlig død innen 2050*.

Talleraas, Cathrine, Katharina Koch (2024) *Border management in flux: Comparative lessons from the Norway-Russia and Finland-Russia borders (2015-2023)*. Haugesund: Western Norway University of Applied Sciences (HVL) (INFLUX Policy Brief no. 1(4)-2024)

CMI Reports

Asri, Viola (2024) *How (not) to enhance women's access to dignified work and earnings?.* Bergen: Chr. Michelsen Institute (DLL Knowledge Review no. 04)

Asri, Viola (2024) *Promoting women's economic empowerment through business trainings*. Bergen: Chr. Michelsen Institute (DLL Knowledge Review no. 03)

Asri, Viola, Magnus Hatlebakk and Espen Villanger (2024) *How can women benefit from private sector development?*. Bergen: Chr. Michelsen Institute (CMI Report R 2024:03)

Flåtnes, Jon Einar (2024) *Climate adaptation interventions in smallholder agriculture*. Bergen: Chr. Michelsen Institute (DLL Knowledge Review no. 02)

Hatlebakk, Magnus (2024) *Impact of Village Savings and Loan Associations (VSLAs)*. Bergen: Chr. Michelsen Institute (DLL Knowledge Review no. 06)

Nimatuj, Irma Alicia Velásquez (2024) *Violencia sexual relacionado con el conflicto armado interno y justicia transicional en Guatemala*. Bergen: Chr. Michelsen Institute (CMI Report R 2024:2) 53 p.

Nimatuj, Irma Alicia Velásquez (2024) *Conflict Related Sexual Violence (CRSV) and Transitional Justice in Guatemala*. Bergen: Chr. Michelsen Institute (CMI Report R 2024:01)

Ringdal, Charlotte (2024) *Conflict and domestic turmoil: A review of intimate partner violence in conflict settings*. Bergen: Chr. Michelsen Institute (DLL Knowledge Review no. 07)

Ringdal, Charlotte, Bet Helena Caeyers (2024) *Violence against children: Impact of parenting and community-based programs in low- and middle-income countries*. Bergen: Chr. Michelsen Institute (DLL Knowledge Review no. 05)

Ringdal, Charlotte, Bet Helena Caeyers (2024) *Impacts of parenting programs in low- and middle-income countries*. Bergen: Chr. Michelsen Institute (DLL Knowledge Review no. 01)

Rudling, Adriana (2024) *The Colombian Commission for the Clarification of Truth, Coexistence and Non-Repetition and Conflict-Related Sexual Violence*. Bergen: Chr. Michelsen Institute (CMI Report R 2024:04)

Tøraasen, Marianne (2024) *What works in combatting gender-based violence?*. Bergen: Chr. Michelsen Institute (DLL Knowledge Review no. 08)

Sudan Reports

Sulieman, Hussein M., Gidske Leknæs Andersen, Mohamed Talib (2024) *Social and Spatial Flood Risk Analysis for Decision Making: Cases from Two Flood Prone Areas in Eastern Sudan*. Bergen: Chr. Michelsen Institute (Sudan Report SR 2024:01)

CMI Working Papers

Mæstad, Ottar (2024) *Bistand eller kjøp av tjenester. Hvordan finansiere bidrag til globale fellesgoder?*. Bergen: Chr. Michelsen Institute (CMI Working Paper WP 2024:1) 24 p.

Sudan Working Papers

Babekir, Adam, Lovise Aalen (2024) *When Refuge is Home: Sudan's war-affected IDPs in Gedarif State, Eastern Sudan*. Bergen: Chr. Michelsen Institute (Sudan Working Paper SWP 2024:02)

Yahya, Abdelmageed M., Abdalla Onour (2024) *Local Perceptions and Experiences of Smuggling and Human Trafficking in Sudan. The case of North Darfur and Northern State of Sudan*. Bergen: Chr. Michelsen Institute (Sudan Working Paper SWP 2024:1) 40 p.

Sudan Briefs

al-Nagar, Samia, Liv Tønnessen (2024) *Breaking the silence on domestic violence*. Bergen: Chr. Michelsen Institute (Sudan Brief 2024:2) 4 p.

Bauer, Gretchen, Akosua K. Darkwah (2024) *The Cost of Doing Politics in Ghana: What does violence against politicians look like?*. Bergen: Chr. Michelsen Institute (CMI Brief no. 2024:01) 4 p.

Nihar, Samia (2024) *Sexual violence in Sudan: From denial to recognition*. Bergen: Chr. Michelsen Institute (Sudan Brief 2024:1) 4 p.

Sekhu, Lesego, Sinqobile Makhathini, Jasmina Brankovic (2024) *Addressing CRSV through Truth Commissions in Africa*.

CMI Briefs

Gretchen Bauer, Akosua K. Darkwah (2024) *The Cost of Doing Politics in Ghana: What does violence against politicians look like?* Bergen: Chr. Michelsen Institute (CMI Brief no. 2024:01) 4 p.

Villanger, Espen, Lovise Aalen (2024) *Improving working conditions for women in African industrial parks*. Bergen: Chr. Michelsen Institute (CMI Brief no. 2004:2) 4 p.

U4 Issues

Forster, Robert (2024) *Anti-corruption in peacebuilding practice*. Bergen: Chr. Michelsen Institute (U4 Issue 2024:8) 46 p.

Jackson, David, Oksana Huss, Oleksandra Keudel (2024) *Advancing corruption prevention in Ukraine: a constructive approach*. Bergen: Chr. Michelsen Institute (U4 Issue 2024:03)

Jackson, David, Oksana Huss, Oleksandra Keudel (2024) *Розвиток запобігання корупції в Україні: конструктивний підхід*. Bergen: Chr. Michelsen Institute (U4 Issue 2024:05)

Keudel, Oleksandra (2024) *Advancing anti-corruption capacity in Ukraine's local self-government*. Bergen: Chr. Michelsen Institute (U4 Issue 2024:9)

Kinyera, Paddy (2024) *Anti-corruption measures in the context of oil. Evading the 'resource curse' in Uganda*. Bergen: Chr. Michelsen Institute (U4 Issue 2024:7)

Nicaise, Guillaume, Mark Worth (2024) *Whistleblowing in aid organisations: Successful approaches for reporting and protection*. Bergen: Chr. Michelsen Institute (U4 Issue 2024:2)

Norén-Nilsson, Astrid (2024) *Non-state actors and anti-corruption work in Cambodia: Gaps, opportunities, and synergies*. Bergen: Chr. Michelsen Institute (U4 Issue 2024:6)

Norén-Nilsson, Astrid (2024) *Non-state actors and anti-corruption work in Cambodia: Gaps, opportunities, and synergies*. Bergen: Chr. Michelsen Institute (U4 Issue 2024:6)

Oviedo, Juan Camilo Ceballos, Benjamin K. Sovacool, Saul Mullard (2024) *Wind and solar energy in Mexico and Kenya: Corruption risks and drivers*. Bergen: Chr. Michelsen Institute (U4 Issue 2024:1)

Pring, Coralie, Suzanne Mulcahy, Beauty Emefa Narteh (2024) *Including civil society perspectives in UNCAC: Lessons from other international treaties*. Bergen: Chr. Michelsen Institute (U4 Issue 2024:10)

Shiple, Tom (2024) *Evaluating anti-corruption interventions: The state of practice*. Bergen: Chr. Michelsen Institute (U4 Issue 2024:04)

U4 Briefs

Adams, Karin, Frederike Diny, Sheenam Puri (2024) *How to make the UN Convention against Corruption's Implementation Review Mechanism more effective*. Bergen: Chr. Michelsen Institute (U4 Brief 2024:6)

Dashpurev, Bayar (2024) *The 'coal theft' case: Corruption and reform of Mongolia's strategic minerals governance*. Bergen: Chr. Michelsen Institute (U4 Brief 2024:4)

Gregirchak, Iaroslav, Sofie Arjon Schütte (2024) *Evolving anti-corruption practice in rebuilding Ukraine: The Agency for Restoration and Infrastructure Development*. Bergen: Chr. Michelsen Institute (U4 Brief 2024:1)

Gregirchak, Iaroslav, Sofie Arjon Schütte (2024) *Розвиток антикорупційної практики у відбудові України: Роль державного агентства відновлення та розвитку інфраструктури*. Bergen: Chr. Michelsen Institute (U4 Brief 2024:2)

Gregirchak, Iaroslav, Sofie Arjon Schütte (2024) *Les pratiques évolutives de lutte contre la corruption dans l'Ukraine en reconstruction: l'Agence pour la reconstruction et le développement des infrastructures*. Bergen: Chr. Michelsen Institute (U4 Brief 2024:3)

Loureiro-Revilla, Rosa (2024) *Corruption as a limit to state capacity: Mobile phones in Peruvian prisons*. Bergen: Chr. Michelsen Institute (U4 Brief 2024:7)

Malca, Camila Gianella (2024) *Deforestation in Peru: Confronting the informal practices, state capture, and collusion*. Bergen: Chr. Michelsen Institute (U4 Brief 2024:5)

U4 Guides

International, Penal Reform, U4 Anti-Corruption Resource Centre (2024) *Corruption in prisons: A guide for detention monitors*. Bergen: Chr. Michelsen Institute (U4 Guide 2024:1)

Newspaper Op-Eds

Amundsen, Inge (2024) *Protests in Kenya and Uganda highlight corruption at the top - but political elites don't give in without a fight*. *The Conversation* 31 July 2024

Mogstad, Heidi (2024) *Sykeliggjøring av veteraner. Klassekampen* 10.09.2024

Mogstad, Heidi (2024) *Uskyldige barn defineres som trusler både i Gaza og i Brussel*. *Panorama nyheter*, 29.2.2024

Mogstad, Heidi (2024) *Vi må lære oss å dele*. *Dagsavisen* 9.11.2024

Mæstad, Ottar (2024) *Bistand fordi vi tjener på det. Virkelig?*. *Morgenbladet* 19.1.24

Mæstad, Ottar (2024) *Dele på regningen – et alternativ til Bistand 2.0*. *Panorama* 28.6.2024

Norbakk, Mari (2024) *Qatar in Gaza*. *DER - arabisk-norsk tidsskrift*, www.derjournal.no.

Stoltenberg, Camilla, Bent Høie, Ottar Mæstad (2024) *Global helse handler om mer enn bistand. Det er et spørsmål om vår egen sikkerhet..* *Aftenposten* 8.11.2024

Strand, Arne (2024) *IS-terror utan ende?*. *Panorama nyheter* 18.04.2024

Strand, Arne (2024) *Er egentleg Kina ein nøytral utviklingsaktør?*. *Panorama nyheter* 10.09.2024

Strand, Arne (2024) *Med moral skal det afghanske folk styrast*. *Panorama nyheter* 18.09.2024

Sørbø, Gunnar (2024) *Farlige omdreininger i Sudan-krigen*. *Panorama nyheter* 14.06.2024

Telle, Kari, David Aled Williams (2024) *Prabowos seier: Går Indonesia inn i en ny strongman-era ?*. *Panorama nyheter* 22.2.2024

Tønnessen, Liv (2024) *Sudan er også et helvete på jord*. *Panorama nyheter* 25.01.2024

Report from the Board

Vision and mission

Founded in 1930, Chr. Michelsen Institute (CMI) is an independent, multi-disciplinary research institute, located in Bergen, Norway.

Inspired by its vision Research for a just and equal world, the Institute addresses global development challenges by providing research-based knowledge that inspires and shapes policy and practice. The Institute has a particular focus on challenges facing poor and vulnerable groups in the global South, and the primary audience are national and international actors who influence international development.

The Institute carries forward the legacy of its founder, the late Christian Michelsen, to promote respect, understanding and amicable relations between nations and peoples. The work is carried out in close collaboration with partners from all over the world, including the people to whom the research is most important.

Strategic and Structural priorities

In 2023 the new strategy for the period 2023-2028 was approved by the CMI Board.

CMI's mission is to: Address global challenges by providing research-based knowledge that inspires and shapes policy and practice.

CMI strives to be increasingly recognised internationally for cutting-edge, interdisciplinary academic and policy-relevant research. The priorities of the 2023-2028 strategy are:

- **Strategic Priorities**
 - High Quality Research
 - Impact for Societal Change
 - Equal Knowledge Production
- **Structural Priorities**
 - An inclusive Workplace
 - A Developing and Sustainable Organisation
 - Social Responsibility

Organisation

CMI had a total of 105 employees as of 31.12.2024 and conducted 81,9 person-years (full time equivalents) during the year.

The research is organized in seven multi-disciplinary research groups:

- Tax
- Rights & Gender
- Democracy & Governance
- Poverty & Global Health
- Climate & Natural Resources
- Corruption
- Humanitarianism & Migration

CMI runs the U4 Anti-Corruption Resource Centre. The centre provides knowledge that can reduce the harmful effects of corruption on development. The Centre is funded by Canada, Denmark, Finland, Germany, Norway, Sweden, Switzerland, and the UK.

CMI is a partner in four cross-institutional centres:

- **Centre on Law & Social Transformation (LawTransform)** - *LawTransform brings together scholars, students and practitioners who share an interest in how law shapes societies, and in the use of rights and courts as tools for social change. The annual Bergen Exchanges on Law and Social Transformation is a flagship event. The centre is a cooperation with the Department of Comparative Politics at the University of Bergen.*
- **Bergen Global** - *is a hub for research communication on global challenges and hosts a comprehensive library. In 2024, the centre organized 80 events covering topics such as elections, Scandinavian development strategies, and conflicts. It also launched a series called "Who is Who in the Middle East", focusing on key regional actors. The centre engages researchers digitally and offers in-person, hybrid, and recorded events, all free and open to the public. Bergen Global is a cooperation with the University of Bergen.*
- **Centre for Intervention Science in Maternal and Child Health (CISMAC)** This is as a Centre of Excellence, assigned by the Research Council of Norway. The centre is a cooperation with Centre for International Health at the University of Bergen as well as other national and international partners.

- **Development Learning Lab (DLL)** - is a research and learning centre aiming to enhance learning and improve the results of development cooperation. DLL partners with development organisations and governments to provide evidence and do research along with the implementation of development programmes. The center is a collaboration with UiB and NHH/SNF.

The members of the Board per 31.12.2024 were Synnøve Bendixsen (chair), Catharina Bu, Andrew Norton, Alexander Cappelen, Matthew Gichohi, Liv Tønnessen, and Arne Strand (substitute).

Publications and media

In 2024 (2023 numbers in brackets), the institute published 3 (6) books and anthologies, 58 (45) peer-reviewed articles, and 22 (25) book chapters.

We also published 26 (24) reports and issue papers, 9 knowledge reviews, 33 (34) briefs, working papers, insights and project disseminations, 25 (16) op-eds/newspaper articles/radio and tv appearance, and 42 (53) blog posts. Our researchers contributed 36 (66) conference papers/presentations, and 38 (57) popular dissemination/presentations.

CMI researchers are popular sources for journalists, both nationally and internationally. In 2024 CMI appeared in 1951 (406) news articles, a significant rise seen particularly in international media. 71 percent of CMI's news coverage was online.

CMI continued its active presence on social media in 2024. While the social media landscape changed significantly with the mass exodus of many institutions from X (Twitter), CMI followed suit, and in turn focused much more on LinkedIn.

FINANCIAL PERFORMANCE

Revenue

The Institute's total revenue increased from NOK 118.0 mill. in 2023 to NOK 130.8 mill. in 2024. CMI carried out externally funded projects of a total value of NOK 108.1 mill., compared to NOK 95.4 mill. in 2023. Fee revenues increased from NOK 71.0 mill. to NOK 76.0 mill., while the number of researcher / project staff increased from 58.8 to 62.3 full time equivalents.

Core funding from the Norwegian Research Council amounted to NOK 20.5 mill., while NOK 2.25 mill. was contributed from the Chr. Michelsen Fund (CMF).

Projects with funding from the Research Council

of Norway constitute 33,2 % of external revenue, compared to 38,9 % in 2023 (core funding not included).

Revenue from international sources continues to grow and accounted for NOK 46.4 mill. in 2024, driven by increase in EU-funded projects and growth at the U4 Centre. Revenue from Norwegian sources at NOK 84.2 mill. where at the same level as 2023.

The Norwegian government administration (Ministry of Foreign Affairs and Norad) represents important clients for the Institute, accounting for 15.5 % of project revenues. As a share of project revenue this is an increase from previous years.

CMI aims to develop an even broader funding base. The Institute has succeeded in widening the international funding base and works systematically to increase income from commissioned research in Norway.

Result and continued operation

In 2024, CMI had a negative operating result of NOK -5.3 mill., compared to NOK -3.7 mill. in 2023. The lower operating result can be explained by a higher growth in operating costs than operating income and is mainly driven by higher payroll costs and lower activity than planned for in some of our research projects.

The annual result of 2024 is negative by NOK -3.0 mill. The positive financial result is shaped by higher interest income and currency exchange differences. The payable tax on commissioned research this year amounts to NOK 0.0 mill.

Current liabilities have decreased by 8 % mainly due to less prepayments on projects. There is a slight drop in the equity ratio from 25.3% to 24.9% as total equity has decreased by NOK -3.0 mill. To NOK 30.5 mill.

In accordance with the Accounting Act, section 3-3a, the Board confirms that the requirements for continued operations are fulfilled.

Cash flow, investments, finances and liquidity

The Institute's liquidity reserves decreased from NOK 73.3 mill. to NOK 58.7 mill. during 2024. In 2024 we had a negative cash flow mainly from a decrease in pre-invoiced/pre-paid projects.

As of 31.12.2024, the Institute's liquid reserves cover 79 % of short-term debts. In 2024, the working capital decreased from NOK 6.2 mill. to NOK 4.5 mill.

The risk of loss, except from exchange rate fluctuations, is minimal as revenue comes mainly from Norwegian and international development aid agencies.

The decrease in total capital from NOK 132.6 mill. to NOK 122.6 mill. is mainly attributed to a decrease in pre-invoiced/pre-paid projects by NOK 9.1 mill.

In the view of the Board, the annual accounts of 2024 provide an accurate picture of the Institute's assets and liabilities, financial position, and result.

Market and financial risks

CMI has seen increased competition when applying for grants from the Research Council of Norway, particularly from the university sector. The Norwegian development aid budget is a main source of income for the institute, and is subject to political pressure for reallocations towards other parts of the national budget. The overall opportunities for future development of the Institute are considered to be satisfactory, but we have to be dynamic in order to adapt to changing focus and needs.

CMI is exposed to fluctuations in exchange rates. The exposure is increasing due to an increasing share of revenue in foreign currency, and a high share of international costs for some research projects. 35.5 % of the Institute's external project revenue is financed by international funding sources. In recent years the Institute has seen a net exchange gain on our currency reserves. In 2024 there was a significant effect related to the EUR/NOK exchange rate.

The Institute has implemented routines for risk assessment and mitigation, and access to highly qualified and motivated staff that attract funding is considered one of the most important factors to sustain revenue. After years of high growth, the institute expects a period of consolidation both in terms of revenue and number of staff.

Working environment and personnel

2024 employment statistics	Men	Women	Total
Number of employees [with associated positions, 2024]	42.1%	57.9%	133 [105 emplo. 31.12.2024]
Number of employees [without associated positions, 2024]	41.9%	58.1%	118 [91 emplo. 31.12.2024]
Temporary employees	8	11	19
Associated employees	6	8	14
Part-time employees	7	5	12
Management	3	5	8
Sick-leave	2,4%	6,3%	4.6%

Please note that Post Doc. researchers and Doctoral Researchers (PhD) fall into the category "temporary employees".

Gender equality

Among the Institute's employees in 2024, 57.9% are women and 42.1% are men. 50% of the members of the Board are women, as are 62.5% of the management team (5 of 8 leaders are women). Of the new employees CMI hired in 2024, 16,7% were women and 83,3% were men. This is no cause for concern as we have slightly more women than men overall. CMI received applications from candidates of all ages, the majority aged between 30-49; 29.13% of all candidates were between the ages of 30-39 years of age and 30.12% of the candidates were between the ages of 40-49. This partially explains why the candidates CMI hired were on average 32.5 years old.

In 2024 women took an average 75% of all parental leave taken in the organization [29.5 weeks], while men took an average of 25% of parental leave taken within the organization [10 weeks].

2024 gender and pay statistics	% Women	Women's pay as % of men's pay
Researcher 1 (or equivalent)	50%	96.5%
Researcher 2 (or equivalent)	56%	89.7%
Post Doc. (or equivalent)	40%	100.6%
Doctoral researcher	100%	N/A
Senior executive officer	100%	N/A

CMI has developed its wage system and welfare schemes to ensure equal opportunities for wage and career development, with election rules for Board members guaranteeing gender representation. In 2024, CMI completed its gender-based wage statistics as part of the mandatory annual Activity and Reporting Obligation, showing that women's pay is 95.8% of men's pay when excluding associated positions. Committed to fulfilling this obligation, CMI creates an annual action plan to promote equality and prevent discrimination, in adherence to its Gender, Equality, and Inclusion plan.

Diversity and inclusion

CMI's recruitment policies aim to ensure equal opportunities and prevent discrimination based on country of origin, ethnicity, religion, or beliefs, demonstrated by a broad reach in attracting diverse candidates. In 2024, 86.64% of applicants were from outside Norway, with 72.27% from countries outside Europe and Scandinavia.

CMI has established a recruitment policy for research positions and provided staff with resources such as interview guide templates and legal guidelines to eliminate unconscious bias and ensure a systematic approach to recruitment.

CMI also focuses on creating equal work opportunities regardless of disability and age, supported by an active working environment committee (Arbeidsmiljøutvalg) and a working environment survey (AMIS) conducted in December 2024 to guide strategic initiatives in 2025.

Committed to promoting equality and preventing discrimination, CMI fulfills the annual Activity and Reporting obligation and adheres to a Gender, Equality, and Inclusion plan, which includes offering discrimination training to staff. In 2024, training covered legal aspects of discrimination and strategies to prevent religious discrimination in the workplace.

Accidents and injuries

None of the Institute's employees or associates were involved in any serious accident and / or injury in 2024, there was however one work injury reported to NAV.

Directors & Officers insurance (styreansvarsforsikring)

The Chr. Michelsen Institute has Directors & Officers insurance for the members of the board and the management.

Statement of compliance with the Norwegian Transparency act (Åpenhetsloven)

This statement is made pursuant to §5, of the Norwegian Act relating to enterprises' transparency and work on fundamental human rights and decent working conditions (Transparency Act) and sets out the steps CMI has taken to identify, mitigate and prevent adverse impacts on fundamental human rights and decent working conditions in our supply chains or in any part of CMI's operations. CMI will publish our account of due diligence on our website at cmi.no/about/transparency-act by 30 of June each year.

Environmental report

The Institute's activities are not regulated by licenses or directives, and do not have a direct impact on the external environment. However, extensive travels contribute to greenhouse gas emissions. The Institute has started processes to reduce its environmental footprint.

Annual profit/loss and allocations

The annual result of NOK -3.0 mill. is subtracted from existing equity. The Institute had NOK 15.2 mill. in unrestricted equity as of 31.12.2024, in addition to paid in and restricted equity of NOK 15.3 mill.

Bergen, 18 March 2025

Alexander Cappelen

Alexander Cappelen

Synnøve Bendixsen

Synnøve Bendixen, Chair

Catharina Bu

Catharina Bu

Aditya

Aditya Bahadur

Matthew Gichohi

Matthew Gichohi

Liv Tønnessen

Liv Tønnessen

Espen Villanger

Espen Villanger, Director

Income statement 2024

Amounts in 1000 NOK

	Note	2024	2023
Operating revenues			
Project revenues	1	130 802	117 864
Other revenues	2	40	152
Total operating revenues		130 842	118 016
Operating expenses			
Project expenses		32 091	24 391
Payroll expenses	3,4	89 474	82 116
Depreciation	5	2 133	2 050
Other operating expenses	2,3	12 439	13 128
Total operating expenses		136 137	121 685
Operating result		-5 296	-3 669
Financial income/expenses			
Interest income		1 301	803
Other financial income		2 853	1 876
Interest cost mortgage loan		-1 255	-1 155
Other financial costs		-608	-915
Total financial income/expenses		2 291	609
Ordinary result before tax		-3 005	-3 060
Tax	11	0	0
NET RESULT		-3 005	-3 060

Cash flow statement 2024

Amounts in 1000 NOK

	2024	2023
Cash flow from operating activities		
Annual result	-3 005	-3 060
Depreciations	2 133	2 050
Changes in pension scheme assets/liabilities	0	0
Changes in long term receivables	748	-1 069
Changes in trade receivables	-2 104	1 089
Changes in other short term receivables	-4 859	6 239
Changes in trade payable and other short term liabilities	-6 018	-7 244
Net cash flow from operating activities	-13 104	-1 995
Cash flow from investments		
Purchase of tangible fixed assets	-530	-1 551
Net cash flow from investments	-530	-1 551
Cash flow from financing activities		
Repayment of long term loans	-1 000	-1 000
Changes of shares	0	0
Changes in value, shares and bonds	0	0
Net cash flow from financing activities	-1 000	-1 000
NET CHANGE IN CASH FLOW TOTAL	-14 635	-4 546
Cash and cash equivalents at 1 January	73 296	77 842
Cash and cash equivalents at 31 December	58 662	73 296
Change in cash and cash equivalents	-14 635	-4 546

Balance sheet as of 31 Dec 2024

Amounts in 1000 NOK

	Note	2024	2023
ASSETS			
FIXED ASSETS			
Tangible fixed assets			
Building at Jekteviksbakken	5	40 458	41 645
Equipment, inventory etc.	5	1 658	2 075
Total tangible fixed assets		42 117	43 720
Financial fixed assets			
Long term receivables	6	2 096	2 844
Total fixed assets		44 213	46 563
CURRENT ASSETS			
Debtors			
Accounts receivable	7	13 406	11 302
Others debtors		6 286	1 428
Total debtors		19 692	12 729
Investments			
Shares in other companies		0	0
Cash and bank deposits	8	58 662	73 296
Total current assets		78 354	86 026
TOTAL ASSETS		122 566	132 589

	Note	2024	2023
EQUITY AND LIABILITIES			
EQUITY			
Paid-in capital			
Original fund	9	15 300	15 300
Retained earnings			
Other equity	9	15 180	18 185
Total equity		30 480	33 485
LIABILITIES			
Pension funds	4	0	0
Long term liabilities			
Long-term loans	10	18 250	19 250
Current liabilities			
Accounts payable		6 710	5 773
Public duties payable		6 511	6 298
Other short term liabilities		60 677	67 783
Tax payable	11	-61	0
Total current liabilities		73 836	79 854
Total liabilities		92 086	99 104
TOTAL EQUITY AND LIABILITIES		122 566	132 589

Bergen, 18 March 2025

Alexander Cappelen
Alexander Cappelen

Synnøve Bendixsen
Synnøve Bendixen, Chair

Catharina Bu
Catharina Bu

Ami
Aditya Bahadur

Matthew Gichohi
Matthew Gichohi

Liv Tønnessen
Liv Tønnessen

Espen Villanger
Espen Villanger, Director

Accounting principles

The annual report is prepared according to the Norwegian Accounting Act 1998 and generally accepted accounting principles.

Project Revenues

Grants and other contributions are recognized at the time of remittance. Revenues from external commissioned research are recognized by the level of project completion. The level of completion is an estimate based on accrued hours and other costs held against estimated total hours and other costs.

Classification and valuation of assets and liabilities

Net current assets comprise creditors due within one year, and entries related to goods circulation. Other entries are classified as fixed assets and/or long-term creditors.

Current assets are valued at the lower of acquisition cost and fair value. Short term creditors are recognized at nominal value.

Fixed assets are valued by the cost of acquisition, in the case of non-incidentally reduction in value the asset will be written down to the fair value amount. Long term creditors are recognized at nominal value.

Receivables

Accounts receivable and other receivables are listed in the balance sheet at nominal value.

Currency

Closed projects/accounts receivable/accounts payable held in foreign currency are valued by the exchange rate on 31 Dec.

Short-term investments

Short term investments (stocks and shares are valued as current assets) are valued at the lower of acquisition cost and fair value at the balance sheet date. Dividends and other distributions are recognized as other financial income.

Fixed assets

Property and equipment are capitalized and depreciated over the estimated useful economic life. Direct maintenance costs are expensed as incurred, whereas improvements and upgrading are assigned

to the acquisition cost and depreciated along with the asset. If carrying value of a noncurrent asset exceeds the estimated recoverable amount, the asset is written down to the recoverable amount. The recoverable amount is the greater of the net selling price and value in use. In assessing value in use, the estimated future cash flows are discounted to their present value.

Cash flow

The cash flow statement is presented using the indirect method. Cash and cash equivalents include cash, bank deposits and other short term highly liquid placement with original maturities of three months or less.

Pensions

The premium cost is regarded as the pension cost for the period and classified as wage cost in the profit and loss statement.

Tax

Tax expenses in the profit and loss account comprise of tax payable for the accounting period. Deferred tax is not recognized in the profit and loss account or in the balance sheet as future taxable income is not made probable.

NOTE 1 PROJECT REVENUES

	2024	2023
Project revenues exclusive of cooperating partners*	108 055 558	95 373 098
Grants	20 496 242	20 190 841
Chr. Michelsen Fund	2 250 000	2 300 000
TOTAL PROJECT REVENUES	130 801 800	117 863 939

* External project revenues are stated without contributions to cooperating partners, NOK 24 281 643 in 2024.

Geographic distribution	2024	2023
Norway	84 401 862	84 018 984
Abroad	46 399 938	33 844 955

NOTE 2 JOINT PROPERTY

CMI and Nygårdshøyden Eiendom (a real-estate company under the University of Bergen) own the building in Jekteviksbakken 31. They have established a joint housing ownership, Sameiet Jekteviksbakken 31, to manage the property. The joint ownership's income is first and foremost contributions to a maintenance fund for future upgrading and maintenance of the building, and the owners' parts of the costs related to insurance premium and accounting. CMI owns 44.41% of the joint property. Income and costs from the joint property are included in the CMI accounts according to the owner's share. This is included in the income statement under respectively Other revenue and Other operating expenses.

CMI'S SHARE	2024	2023
Income	19 297	99 503
Cost	1 691	19 667

NOTE 3 SALARIES AND SOCIAL COSTS

	2024	2023
Salaries	69 088 592	64 749 342
Social security taxes	10 557 900	9 815 805
Pension costs	5 677 992	3 956 821
Other benefits	1 371 937	1 796 901
Other social costs	2 777 270	1 797 461
TOTAL	89 473 691	82 116 329

* The balance of the Pension deposit fund was accounted in 2023, thus reducing the pension cost by 0.9 mill.NOK

Person-years	85.8	83.4
--------------	------	------

Leadership remuneration	2024	2023
Director's salary	1 346 186	1 280 398
Other benefits	24 466	25 746
Pension costs paid by CMI	145 985	137 230
	1 516 637	1 443 374

Board remuneration including Payroll Tax was 319 981 in 2024.

CMI and CMF share the same Board. Board members' fees are paid 2/3 by CMI, NOK 312 981 and 1/3 by CMF, NOK 107 000 in 2024.

Ordinary result before tax employment.

Long-term loans to employees amount to NOK 785 513. The interest rate equals the standard rate offered in employment relationships.

Auditor's fees (excluding VAT)	2024	2023
Audit for accounts	265 834	257 650
Consultant fees regarding pension and tax	5 240	15 600
Other services	70 000	61 074
TOTAL	341 074	334 324

NOTE 4 PROVISION FOR PENSION LIABILITITES, PENSION COSTS

CMI has a pension scheme in place satisfying the Act of Obligatory Pension Scheme. In relation to the transition as of 01.01.2017 from defined benefit plan to defined contribution scheme, an agreement was entered between CMI and the employees to compensate their future loss. The compensation consists of a yearly payment, which is dependent of the member still being employed by CMI. Compensation for loss of pension was recorded as salary with NOK 246 356 in 2024.

Defined-contribution pension scheme

The defined-contribution pension scheme concerns all staff in 20 % position or more. Premiums are paid with 7 % of salaries up to 7.1 G, and 25.1 % for salaries between 7.1 G and 12 G.

98 persons at CMI are enrolled in this scheme by 31 Dec 2024.

	2024	2023
Deposits	3 659 835	3 426 525
Net costs	3 659 835	3 426 525
Payroll Tax	516 037	483 140
RESULT	4 175 871	3 909 665

Defined-contribution pension scheme - employees' share is 2 % of pension base, NOK 1 344 646 in 2024.

AFP - Early Retirement Scheme

CMI participates in the LO/NHO-agreements, which enables all employees to choose to retire and receive AFP (Early retirement agreement) from the age of 62. This arrangement gives a life-lasting addition to the ordinary public pension, and is financed by payment of a premium, which in 2024 is 2.7 % of all salary between 1 G and 7.1 G for employees under the age of 62. This is a defined contribution pension scheme and the premiums are charged as expenses continuously.

NOTE 5 TANGIBLE FIXED ASSETS

	Property Jekteviken	Installations building	Office furniture, inventory	Office machinery	Sum
Acquisition cost 01.01	56 806 325	798 364	5 107 211	5 633 576	68 345 476
Acquisition this year	1 18 033		21 718	3 90 683	530 434
Decline/sales this year	-	-	-	-	-
Acquisition cost 31.12	56 924 358	798 364	5 128 929	6 024 260	68 875 911
Accumulated depreciation 01.01	15 161 523	210 693	4 439 193	4 814 401	24 625 810
Depreciation this year	1 304 412	79 836	191 237	557 843	2 133 328
Balance value 31.12	40 458 423	507 835	498 499	652 015	42 116 773
Expected life (year)	50	10	5 and 10	3	
Depreciation per year	2%	10%	10% & 20%	33 %	

Depreciation of property is related to the new building in Jekteviken as from 1 Aug 2009.

NOTE 6 FINANCIAL FIXED ASSETS

	2024	2023
Running account Sameiet Jekteviksbakken 31	876 793	778 102
Deposit fund - pension*	28 263	736 947
Loans to employees **	1 190 847	1 328 601
TOTAL	2 095 903	2 843 651

* In 2024, NOK 735.027 was deducted from the deposit fund to cover pension premium

** Loans to employees includes both long-term and short-term loans

CMI issued a subordinated loan of NOK 17.4 mill to Chr. Michelsen Research (CMR) in connection with the split in 1992. The loan agreement was reconfirmed in a new agreement dated 5 May 2004. There is no repayment and no interest payments from the loan, but CMI has the right to convert the loan to shares in case the share capital is expanded. CMR has merged with several other research institutes to become NORCE AS. Due to the precautionary principle/uncertainty on when this conversion might happen, the claim is not in CMI's balance, but CMI upholds these rights towards NORCE.

NOTE 7 RECEIVABLES

	2024	2023
Accounts receivable	3 433 664	4 803 786
Earned, non-invoiced revenues	9 972 013	6 498 063
TOTAL	13 405 677	11 301 849
Pre-invoiced/Advances from customers	-44 014 875	-52 077 786

NOTE 8 DEDUCTED INCOME TAX

By 31 Dec NOK 3 578 034 is deposited on a separate bank account. The corresponding figure at 31 December 2023 was NOK 3 703 457.

Unpaid deducted Employee tax as of 31 December 2024 is NOK 3 346 924.

NOTE 9 EQUITY

	Retained earnings	Paid-in capital	Total
Equity as of 01.01	18 184 980	15 300 000	33 484 980
Net result of the year	-3 004 549	-	-3 004 549
Equity as of 31.12	15 180 431	15 300 000	30 480 431

NOTE 10 DEBT DUE LATER THAN 5 YEARS

	2024	2023
Chr. Michelsens Fund (CMF)	-	-
Mortgage loan DNB	18 250 000	19 250 000
Total	18 250 000	19 250 000

CMF provided a long-term loan to CMI with a balance of NOK 30 mill. per 01.01.2018, for the building in Jekteviksbakken 31. The loan was repaid and replaced by a mortgage loan in DNB ASA. According to the property deed, CMI owns a part of the building and the building site in accordance with CMI's fraction of the joint property. An underlying ground lease is securing UiB/Magør the right to receive payment for the value of the building site at a potential resale.

The property in Jektevikbakken 31, g.nr. 164 bnr. 1436 snr. 2 in Bergen kommune, is pledged as security for DNB mortgage loan NOK 25.000.000

NOTE 11 TAX

CMI is taxable for the part of the institute's operations which concerns commissioned research. In 2024 this was 30,41% of the total results.

	2024	2023
Tax this year		
Tax payable	-	-
Change in deferred tax	-197 735	-50 041
This years tax effect of change in tax rate	-	-
Sum tax	-197 735	-50 041
Calculation tax base		
Ordinary result before tax	-913 683	-897 384
Permanent differences	14 888	-149 419
Change in temporary differences	118 043	227 460
Tax base before tax loss carried forward	-780 752	-819 343
Use of tax loss carried forward	-	-
Sum tax base	-780 752	-819 343
Temporary differences outlined		
Receivables	-	-
Goods	-	-
Fixed assets	- 1 524 932	-1 406 889
Provisions	-	-
Pensions	-	-
Profit and loss account	-	-
Loss carry forward	-	-
Sum	-1 524 932	-1 406 889
Deferred income tax liability/-asset (22% this year, 22 % last year)	-335 485	-309 516

Deferred tax assets are not recognized in the balance sheet as future taxable income is not made probable.

Auditor's report



Shape the future
with confidence

Statsautoriserte revisorer
Ernst & Young AS

Thormøhlens gate 53 D, 5006 Bergen
Postboks 6163, 5892 Bergen

Foretaksregisteret: NO 976 389 387 MVA
Tlf: +47 24 00 24 00

www.ey.no
Medlemmer av Den norske Revisorforening

To the General Meeting in Chr Michelsens Institutt For Videnskap og Åndsfrihet Sti

INDEPENDENT AUDITOR'S REPORT

Opinion

We have audited the financial statements of Chr Michelsens Institutt For Videnskap og Åndsfrihet Sti (the Company), which comprise the balance sheet as at 31 December 2024, the income statement and cash flow statement for the year then ended and notes to the financial statements, including a summary of significant accounting policies.

In our opinion

- the financial statements comply with applicable statutory requirements, and
- the financial statements give a true and fair view of the financial position of the Company as at 31 December 2024 and its financial performance and cash flows for the year then ended in accordance with the Norwegian Accounting Act and accounting standards and practices generally accepted in Norway.

Basis for opinion

We conducted our audit in accordance with International Standards on Auditing (ISAs). Our responsibilities under those standards are further described in the *Auditor's responsibilities for the audit of the financial statements* section of our report. We are independent of the Company in accordance with the requirements of the relevant laws and regulations in Norway and the International Ethics Standards Board for Accountants' *International Code of Ethics for Professional Accountants (including International Independence Standards)* (the IESBA Code), and we have fulfilled our other ethical responsibilities in accordance with these requirements. We believe that the audit evidence we have obtained is sufficient and appropriate to provide a basis for our opinion.

Other information

The Board of Directors and the Managing Director (management) are responsible for the information in the Board of Directors' report. Our opinion on the financial statements does not cover the information in the Board of Directors' report.

In connection with our audit of the financial statements, our responsibility is to read the information in the Board of Directors' report. The purpose is to consider if there is material inconsistency between the information in the Board of Directors' report and the financial statements or our knowledge obtained in the audit, or otherwise the information in the Board of Directors' report otherwise appears to be materially misstated. We are required to report if there is a material misstatement in the Board of Directors' report. We have nothing to report in this regard.

Based on our knowledge obtained in the audit, it is our opinion that the Board of Directors' report

- is consistent with the financial statements and
- contains the information required by applicable statutory requirements.

Responsibilities of management for the financial statements

Management is responsible for the preparation of the financial statements that give a true and fair view in accordance with the Norwegian Accounting Act and accounting standards and practices generally accepted in Norway, and for such internal control as management determines is necessary to enable the



**Shape the future
with confidence**

preparation of financial statements that are free from material misstatement, whether due to fraud or error.

In preparing the financial statements, management is responsible for assessing the Company's ability to continue as a going concern, disclosing, as applicable, matters related to going concern and using the going concern basis of accounting unless management either intends to liquidate the Company or to cease operations, or has no realistic alternative but to do so.

Auditor's responsibilities for the audit of the financial statements

Our objectives are to obtain reasonable assurance about whether the financial statements as a whole are free from material misstatement, whether due to fraud or error, and to issue an auditor's report that includes our opinion. Reasonable assurance is a high level of assurance, but is not a guarantee that an audit conducted in accordance with ISAs will always detect a material misstatement when it exists.

Misstatements can arise from fraud or error and are considered material if, individually or in the aggregate, they could reasonably be expected to influence the economic decisions of users taken on the basis of these financial statements.

As part of an audit in accordance with ISAs, we exercise professional judgment and maintain professional scepticism throughout the audit. We also:

- Identify and assess the risks of material misstatement of the financial statements, whether due to fraud or error, design and perform audit procedures responsive to those risks, and obtain audit evidence that is sufficient and appropriate to provide a basis for our opinion. The risk of not detecting a material misstatement resulting from fraud is higher than for one resulting from error, as fraud may involve collusion, forgery, intentional omissions, misrepresentations, or the override of internal control.
- Obtain an understanding of internal control relevant to the audit in order to design audit procedures that are appropriate in the circumstances, but not for the purpose of expressing an opinion on the effectiveness of the Company's internal control.
- Evaluate the appropriateness of accounting policies used and the reasonableness of accounting estimates and related disclosures made by management.
- Conclude on the appropriateness of management's use of the going concern basis of accounting and, based on the audit evidence obtained, whether a material uncertainty exists related to events or conditions that may cast significant doubt on the Company's ability to continue as a going concern. If we conclude that a material uncertainty exists, we are required to draw attention in our auditor's report to the related disclosures in the financial statements or, if such disclosures are inadequate, to modify our opinion. Our conclusions are based on the audit evidence obtained up to the date of our auditor's report. However, future events or conditions may cause the Company to cease to continue as a going concern.
- Evaluate the overall presentation, structure and content of the financial statements, including the disclosures, and whether the financial statements represent the underlying transactions and events in a manner that achieves fair presentation.

We communicate with the board of directors regarding, among other matters, the planned scope and timing of the audit and significant audit findings, including any significant deficiencies in internal control that we identify during our audit.

Chr. Michelsen Institute (CMI) is an independent development research institute based in Bergen, Norway. In cooperation with partners from all over the world, we address key development and scientific challenges that generate knowledge to promote justice and equality.

We combine high quality research with an engagement to make knowledge accessible and used. The main disciplines are economics, political science, and social and cultural anthropology.

Chr. Michelsen Institute (CMI)
+47 47 93 80 00
From abroad:
+47 55 70 55 65

P.O.Box 6033
N-5892 Bergen
Norway

Visiting address:
Jekteviksbakken 31
Bergen

E-mail: cmi@cmi.no
www.cmi.no